

GPON ONT

i5200-series

Residential Open Access ONT

The Icotera i5200-series residential ONT series is designed as a long-term GPON termination point in a two-box installation. Optional CATV, ITU-T OMCI standards-compliant provisioning, a vendor-independent approach, and easy installation together with Icotera's focus on design and usability make the i5200-series an obvious choice for GPON fiber termination.

- Aesthetic design
- Vendor-independent provisioning and management
- Lowest total cost of ownership
- Designed for long-lifetime installations

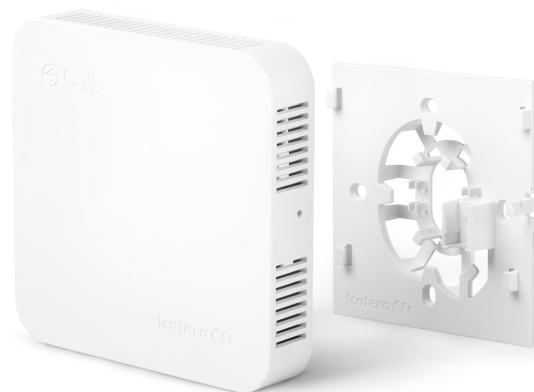


Full flexibility

Together with the vendor independent provisioning and management, the i520x-20 creates the standards setting for a residential Open Access ONT. The i5200-series is designed for a common patch installation, where the ONT is mounted directly on the wall.



Patch installation



FTU installation

i5200-series Residential Open Access ONT

FEATURES

- Vendor-independent GPON ONT
- Hardware forwarding
- Long-lifetime standard interfaces
- Protocol transparent forwarding

NETWORK COMMUNICATION PON INTERFACE

- GPON 2.488/1.244 Gbps (DS/US)
- The i5205 model includes a PON port on the bottom side of the ONT
- Wavelength: TX: 1310 nm, RX: 1490 nm
- G.984.1,2,3,4,5 compliant
- G.988 compliant
- Multi-vendor support
- Forward Error Correction (FEC)
- Ethernet GEM support
- AES encryption
- Dying gasp
- Class B+ optics

LAN INTERFACE

- 1 x 1G LAN
- Auto-negotiation for speed and duplex
- The i5205 model includes an integrated cable tester to detect the following metrics:
 - Short
 - Open
 - Impedance mismatch
 - Cable length

LAYER 2

- 64 byte forwarding at line rate
- Jumbo 9k packets
- Forwarding up to 256 MAC addresses
- VLAN QinQ support
- VLAN 802.1ad support
- Transparent IPv6 forwarding
- Multicast support

QoS

- Support DBA in SR and NSR modes
- Support for Strict Priority and Weighted Fair Queuing
- Support for TCONTs 1 - 5
- Support up to 32 T-CONTs
- 8 upstream or downstream queues configurable via OMCI
- Class of service based on VLAN-ID, 802.1p
- Marking and remarking of 802.1p
- Marking and remarking of DSCP/ToS

CATV (optional)

OPTICAL PARAMETERS

- Input wavelength: 1550 nm - 1560 nm
- Operating optical input power: -10 dBm to 0 dbm
- Optical connector: SC/APC
- WDM filter

RF PARAMETERS

- RF output impedance 75Ω
- Frequency range: 45 MHz - 890 MHz
- Slope (maximum): 5 dB
- RF output level (4% OMI, -8 dBm to 0 dBm): 80 ± 2 dBμV
- CNR ≥ 45dB
- CSO ≥ 60dB
- CTB ≥ 60dB
- Management: via OMCI

VoIP (optional)

- 1 POTS line
- British telephone socket (BS 6312)
- SIP (RFC3261) over IPv4
- 3 REN support
- DTMF signalling
 - SIP INFO
 - Inband
 - Auto
 - RFC 2833
- Caller ID support (DTMF/FSK)
- CLIR
- Advanced dialplan
- Class 5 services
 - Forward all calls
 - Forward on busy
 - Forward on no answer
 - Call waiting
- Codecs:
 - G.711A a-law
 - G.711U μ-law
 - G.722
 - G.729AB
- Codec negotiation
- Modem/Fax detection

MANAGEMENT & MONITORING

- Zero-touch configuration with OMCI provisioning
- Dual bank flash memory with fail-safe firmware upgrading
- Hardware watchdog

OPERATIONAL SPECIFICATIONS

- DC 12 V input
- Power consumption maximum: 3.3 W or 4.4 W (i5205)
- Power consumption in idle state: 2 W or 2.7W (i5205)
- Operating temperature: 5°C - 45°C
- Storage temperature: 5°C - 85°C
- Humidity: 5% - 95% (non-condensing)

PHYSICAL SPECIFICATIONS CASING

- Size: 126 x 140 x 28 mm (W x H x D) or 101 x 106 x 22 mm (i5205)
- Weight: 222 g or 126 g (i5205)
- Area for an optional PON label with the serial number - 16 x 30 mm on the right side
- Product SN, PON SN, FW version and MAC address label on the bottom side
- PON LED indicator for the connection status
- LAN LED indicator for the link status
- CATV LED indicator for the signal status

FIBER TERMINATIONS

- Wall mountable
- The i5205 model supports slide-on-mechanism for easy installation or Schuko in-wall installation

INCLUDED IN THE BOX

- Icotera i5200 ONT
- 12 V power supply unit
- 2 labels with the PON serial number
- The i5205 model includes the FTU for Schuko installation, the optical fibre heat shrink tube, and a screw

SUPPORTED PLATFORMS

- Nokia ISAM 7330/7360
- Huawei MA5600/5800
- ZTE C320
- The ONT supports other specific platforms. For more information, contact our Sales department at sales@icotera.com.

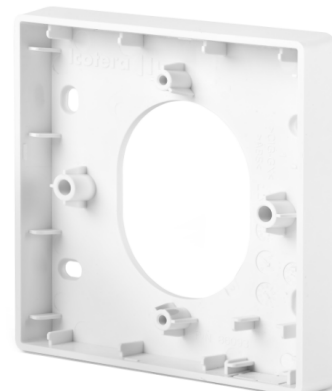
i5200-series residential GPON ONT configuration possibilities



Gateway interface configurations

Model	LAN	VoIP	CATV	Termination
i5204-22	1x1G	-	1x	Patch
i5205-00	1x1G	1x	-	FTU
i5208-20	1x1G	-	-	Patch

For more information and feature requests, contact our Sales department at sales@icotera.com.



Wall plate